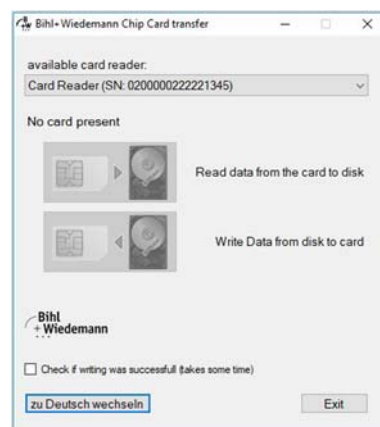


Copying station 5.0 for Bihl+Wiedemann chip cards



(figure similar)



Article no.	BW4046
General information	
Components	Read/write device for chip cards with USB connection cable Chip card transfer-software
Cable length	1 m
Description of operation	The copying station is used for easy duplication of chip cards for Bihl+Wiedemann devices. Via windows compatible software data stored on chip cards can be read and stored in a file on your PC. Stored files can be read and copied into a chip card. suitable for Bihl+Wiedemann chip cards of the memory capacity 32 kByte (BW2079), 128 kByte (BW2222), 512 kByte (BW4055) and MP Plug 32 kByte (BW3241)
System requirements	
Operating system	Vista / Windows 7 / Windows 8 / Windows 10
Compatibility	32bit and 64bit systems
Interface	USB