

AS-i 3.0 SAP4, SAP5, A²SI and ASI4U Programming and Test Tool

For programming, developing and testing of AS-i Slaves

AS-i Specification 3.0



BW1783



BW2061



Article no. BW1783: Compact PCI Board

Article no. BW2061: PCI Board with RS 232

The AS-i 3.0 Programming and Test Tool can be operated in 3 different modes:

- As a standard AS-i Master according to specification 3.0.
- As a tool for programming of the AS-i Slave ICs SAP4, SAP5, A²SI and ASI4U. This can be done with the help of Windows programs.
- As a means to perform function and EMC tests which are necessary for every development of an AS-i slave (EMC test mode).

The EMC-Test Mode

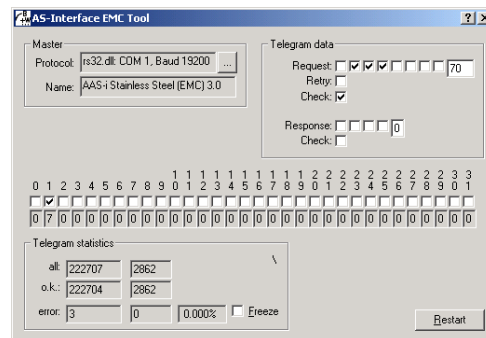
It is possible to put the Master into a state that is not AS-i compliant. This option can be useful for specific tests on AS-i under laboratory conditions (e. g. tests with bursts on the lines or tests with very long wires).

By putting the AS-i Master into the EMC Test Mode it becomes an AS-i test set-up for experts.

In the test mode, the list of addressed slaves and the telegrams for contacting these slaves are given by the host. Also, it is possible to decide from within the host whether faulty answered telegrams from the AS-i Master may be repeated or not (Note: in regular AS-i operation, data telegrams can be repeated one time). As above, there are two error counters. However, in this

mode the first one counts all telegrams while the second counts all faulty telegrams.

The **AS-i EMC.EXE** program is designed for the operation of the AS-i Master in the EMC test mode. This program is also delivered as program for Windows.



Individual software

It is, of course, possible to operate the AS-i Master from other hosts with individual software. The necessary telegrams are described in the manual.

Article no.	BW1783	BW2061
General information		
Type	Compact PCI Board	PCI Board
RS 232 diagnostic interface	–	yes
Interface		
Interface	32 bit PCI Bus interface, 3,3 V/5 V galvanic isolation to AS-i AS-i circuit 1, AS-i circuit 2	
Serial interface	–	RS 232
Program memory (EEPROM)	4 kB	

Article no.	BW1783	BW2061
AS-i		
Cycle time per AS-i circuit	150 μ s * (number of slaves + 2)	
Master profile	M4	
AS-i specification	3.0	
Operating voltage	3,3 V/5 V DC and AS-i voltage	
Operating current	approx. 300 mA out of 5 V power supply approx. 100 mA out of 3,3 V power supply approx. 70 mA out of AS-i per AS-i circuit	
Environment		
Applied standards	EN 61000-6-2 EN 61000-6-4	
Ambient operating temperature	0°C ... +55°C	
Storage temperature	-25°C ... +70°C	
Voltage of insulation	\geq 500 V	
System requirements		
Hardware	IBM compatible PC 80 486, PCI	
Software	<ul style="list-style-type: none"> • DLL drivers (Windows 2000 or higher, incl. Windows 8.1) • Linux driver 	

Accessories:

- AS-i Control Tools (Windows) (art. no. BW1602)