

ASi-3 CC-Link Gateway with integrated Safety Monitor

ASi-3 CC-Link Gateway with integrated safety monitor

1 Master ASi-3, CC-Link Device

Up to 31 release circuits

- up to 6 CAT4, SIL 3 safe output circuits on the Monitor electronic safe outputs

Safe ASi outputs are supported

- up to 31 independent ASi outputs
- Multiple safe ASi outputs possible via a single ASi address

Monitor configuration can be „arbitrarily“ large

- 256 devices
- Identical reaction time due to artificial limitation to 256 devices

Safe speed and standstill monitoring


Applications up to category 4/PLe/SIL 3

Chip card for storage of configuration data



(Figure similar)



Figure	Field-bus Interface	Safety communication	Outputs Safety, SIL 3, cat. 4	Outputs Safety, SIL 3, cat. 4	Inputs safety, expandable to	Safety outputs, independent according to SIL 3, expandable to	Number of ASi networks, number of ASi Master ⁽¹⁾	Integrated decoupling, ASi current measurement in the gateway ⁽²⁾	Diagnostic and configuration interface ⁽³⁾	Article no.
	CC-Link	Safe Link	3 x 2 channels	6 release circuits; 6 x electronic safe outputs	max. 31 x 2 channels, max. 1891 in max configuration	max. 31, max. 991 in max. configuration	1 ASi network, 1 ASi-3 master	yes, max. 4A/ ASi network	Ethernet diagnostic	BWU2833

(1) **Number of ASi networks, number of ASi Master: Safety devices:**

"Single Master": 1 ASi network, 1 ASi-3 Master.

(2) **Integrated decoupling, ASi current measurement in the gateway**

"yes, max. 4A/ASi network": Data decoupling integrated in the gateway. Cost-effective power for 2 ASi networks with 1 power supply (optionally supply of multiple Single Gateways by 1 power supply). Operation with short cable lengths with standard 24 V power supply possible.

(3) **Diagnostic and configuration interface**

"Ethernet diagnostic": Access to ASi master and safety monitor via Bihl+Wiedemann proprietary software over Ethernet diagnostics interface.

The latest version of the device description file of the gateway is available in the "Downloads" section of the respective device.

ASi-3 CC-Link Gateway with integrated Safety Monitor

Article no.	BWU2833
Fieldbus Interface	
Type	CC-Link; according CC-Link specification
Baud rates	156 Kbps up to 10 MBps
Card slot	chip card for storage of configuration data
Diagnostic Interface	
Type	Ethernet; RJ-45 acc. to IEEE 802.3
CC-Link	
Functions	imaging of the ASi nodes as RW data on CC-Link. complete diagnosis and configuration via CC-Link
Type	remote device
Occupied stations	2-4 (depending on operating mode)
ASi	
ASi specification	ASi-3
Cycle time	150 μ s * (number of ASi-3 nodes + 2)
Operating voltage	30 V _{DC} (20 ... 31,6 V) (PELV voltage)
Operating current	300 mA
ASi Power24V capability ⁽¹⁾	yes
AUX	
Operating voltage	24 V _{DC} (19,2 ... 28,8 V)
Max current consumption	7,2 A
Display	
LCD	indication of ASi addresses and error messages in plain text
LED power (green)	power on
LED cc-link (green)	CC-Link communication active
LED config error (red)	configuration error
LED U ASi (green)	ASi voltage OK
LED ASi active (green)	ASi normal operation active
LED prg enable (green)	automatic addresses programming enabled
LED prj mode (yellow)	configuration mode active
LED AUX (green)	auxiliary power
LEDs SI1 ... SI6 (yellow)	state of inputs: off: open on: closed
LEDs SO1 ... SO6 (yellow)	state of outputs: off: open on: closed
UL-specifications (UL508)	
External protection	An isolated source with a secondary open circuit voltage of ≤ 30 V _{DC} with a 3 A maximum over current protection. Over current protection is not required when a Class 2 source is employed.
In general	UL mark does not provide UL certification for any functional safety rating or aspects of the above devices.

ASi-3 CC-Link Gateway with integrated Safety Monitor

Article no.	BWU2833
Ambient	
Applied standards	EN 60529 EN 61000-6-2 EN 61000-6-4 EN 62061, SIL 3 EN 61508, SIL 3 EN ISO 13849-1, performance-level e
Operating altitude	max. 2000 m
Ambient temperature	0 °C ... +55 °C
Storage temperature	-25 °C ... +85 °C
Housing	stainless steel, for DIN rail mounting
Protection category	IP20
Maximum tolerable shock and vibration stress	according EN 61131-2
Voltage of insulation	≥500 V
Weight	800 g
Dimensions (W / H / D in mm)	100 / 120 / 106

(1) **ASi Power24V**

The device can be operated directly on a 24 V (PELV) power supply. The gateway has been optimized with integrated data coupling coils and adjustable self-resetting fuses for safe use of powerful 24 V power supplies.

Article no.	BWU2833
Safety Monitor	
Start delay	< 10 ms
Max. turn-off time	< 40 ms
Antivalent switches for local inputs	yes
Standstill monitors for local inputs	6 axes up to 50 Hz ⁽¹⁾
Speed monitors for local inputs	3 to 6 axes up to 400 Hz ⁽²⁾
Connection	
Connection	Push-in terminals
Length of connector cable	unlimited ⁽³⁾
Input	
Inputs Safety, SIL3, cat. 4	3 x 2 channels ⁽⁴⁾
Inputs digital, EDM	up to 6 standard inputs ⁽⁴⁾
Switching current	15 mA (T = 100 µs), continuously 4 mA at 24 V
Power supply	out of AUX
Output	
Number of release circuits on the monitor	6
Outputs	semiconductor output max. contact load: 1,2 A _{DC-13} at 30 V, Σ = 7,2 A in sum ⁽⁵⁾
Power supply (semiconductor outputs)	out of AUX

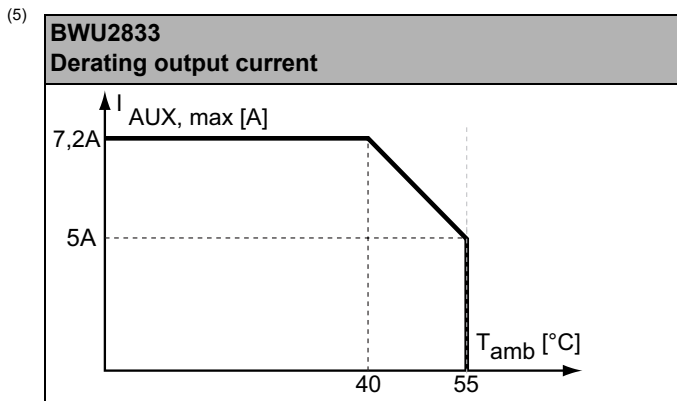
(1) connection at all SI or SO terminals possible.

(2) connection only at terminals SO1 ... SO6 configured as standard inputs (see "Variations of terminal configuration for BWU2833")

(3) loop resistance ≤ 150 Ω

(4) see "Variations of terminal configuration for BWU2833"

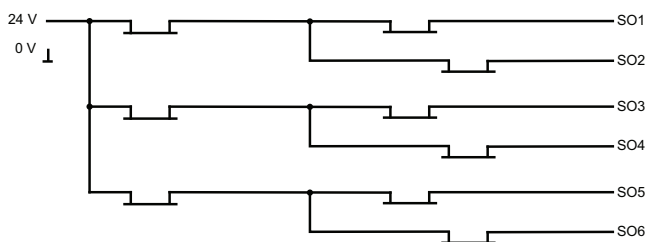
ASi-3 CC-Link Gateway with integrated Safety Monitor



Article no.	Operating current		
	Master power supply, ca. 300mA out of ASi circuits	Master power supply, max. 300mA out of ASi circuit 1 (approx. 70mA ... 300mA), max. 300mA out of ASi circuit 2 (approx. 70mA ... 300mA); in sum max. 370mA	Cost-effective power for 2 ASi networks with 1 power supply, approx. 300mA (PELV voltage)
BWU2833	-	-	•

	BWU2833
Data decoupling integrated in the gateway	•
Redundant power supply out of ASi: all fundamental functions of the device remain available even in case of power failure in one of the two ASi networks	-
Current measurement of the ASi circuits	•
Self-resetting adjustable fuses	•
ASi earth fault monitor distinguishes between ASi cable and sensor cable	•
Cost-effective power for 2 ASi networks with 1 power supply	•

Safety outputs block diagram BWU2833



ASi-3 CC-Link Gateway with integrated Safety Monitor

Variations of terminal configuration for BWU2833

Terminal	Safe output	Safe input for mechanical contacts in combination with T1, T2 ⁽¹⁾	Safe antivalent input ⁽¹⁾	Safe electronic input ⁽¹⁾	Standard input ⁽¹⁾
SI1,2	–	•	•	•	•
SI3,4	–	•	•	•	•
SI5,6	–	•	•	•	•
SO1,2 ⁽²⁾	•	•	•	–	•
SO3,4 ⁽²⁾	•	•	•	–	•
SO5,6 ⁽²⁾	•	•	•	–	•

(1) Inputs must be supplied from the same 24V voltage source connected to the supply terminals of the local safe I/Os of the device.

(2) If outputs are configured as inputs, the input current has to be limited by an external element at $\leq 100\text{mA}$

Connections: Gateway + Safety Monitor

BWU2833	Connection	Description
	SI1, SI3, SI5	Safe input terminal (T1)
	SI2, SI4, SI6	Safe input terminal (T2)
	T1	Clock output 1
	T2	Clock output 2
	SO1 ... SO6	Safe semiconductor outputs 1 ... 6
	24V, 0V	Power supply for local I/Os
	+ASI 1-	Connection of ASi circuit
	ASI +PWR-	Power supply for Gateway and ASi networks

Connections: CC-Link

Signal	Color
1 DA	blue
2 DB	white
3 DG	yellow
4 SLD	n/a
5 F G	n/a

Accessories:

- Safe contact expander, 1 or 2 independent channels (art. no. BWU2548 / BWU2539)
- Bihl+Wiedemann Suite - Safety Software for Configuration, Diagnostics and Commissioning (art. no. BW2916)
- Power supplies, e.g.: 30 V power supply, 4 A, 1 phase (art. no. BW4218), 30 V power supply, 8 A, 1 phase (art. no. BW4219), 30 V power supply, 8 A, 3 phases (art. no. BW4220), 30 V Power Supply, 16 A, 1 phase (art. no. BW4221), 30 V Power Supply, 16 A, 3 phases (art. no. BW4222) (for further power supply units visit www.bihl-wiedemann.de/en/products/accessories/power-supplies)